

Agenda Item 9(d)
SMMC
5/23/11

Legend:

-  Significant Ecological Area
-  1 Cruzan Mesa Vernal Pools
-  2 Piru Creek
-  3 Santa Clara River
-  4 Santa Susana Mountains/Simi Hills
-  5 Valley Oaks Savannah
-  OVOV Planning Area
-  Incorporated Areas
-  Angeles National Forest
-  County Boundary
-  Waterbody and Perennial Stream

GIS Projection - CA State Plane, Zone 5, NAD83, Feet.

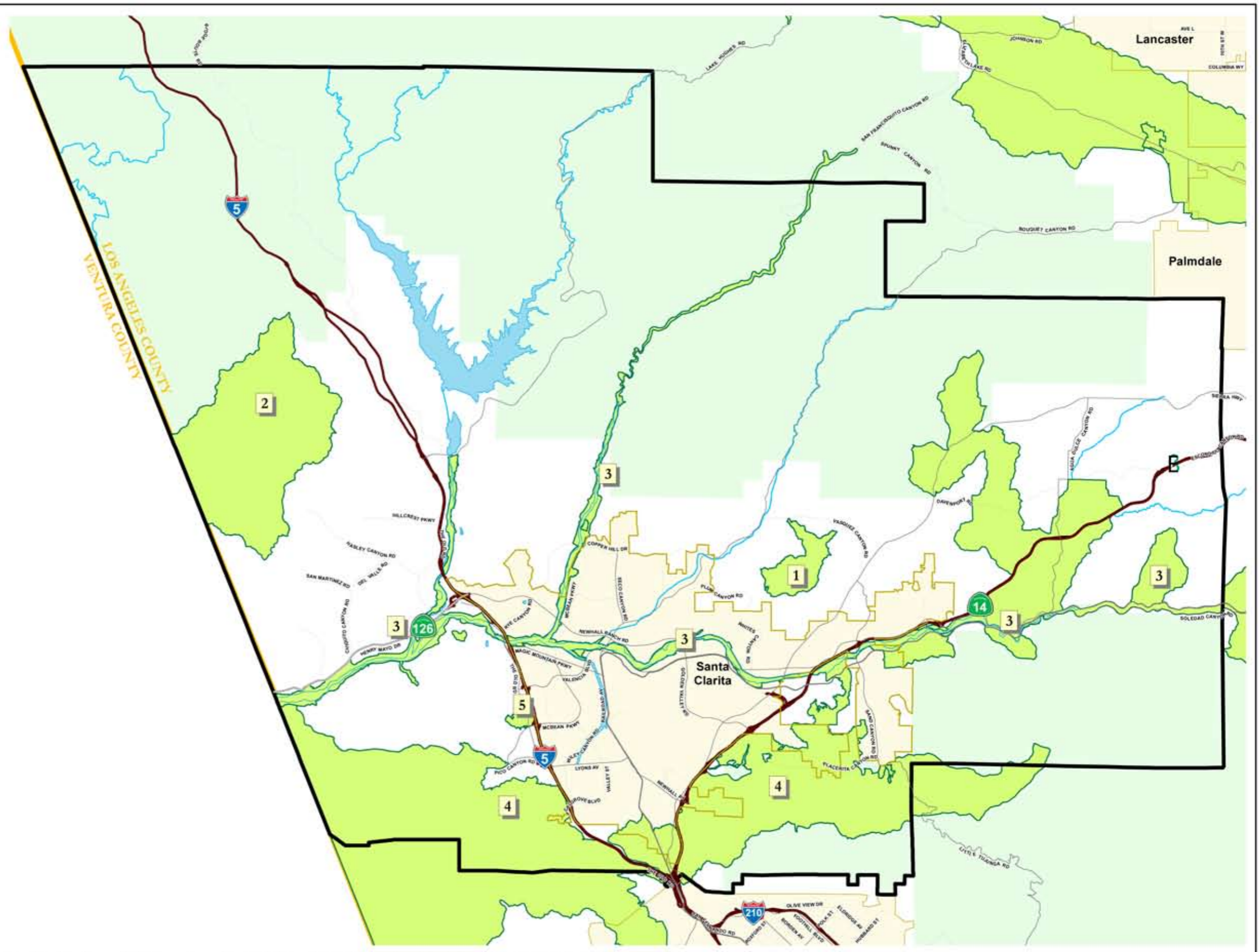
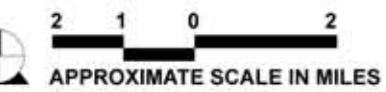


FIGURE 2.0-4

Significant Ecological Areas